



Why Construction Teams Choose Project**Manager**



Overarching Construction Frustrations

The construction industry makes up a significant portion of the U.S. economy with over 7.6 million people working in construction. Annually, nearly \$1.4 trillion worth of construction builds is established throughout the country. Studies point to a 3.6% growth rate every year until 2030 which is faster growth than the manufacturing or services sectors. Despite the massive growth in the construction sector, many remote construction teams still struggle to complete their project on time and within budget when using a traditional project management approach.

Here are some widespread pain points that remote construction teams experience:

- ✓ Miscommunication between the job site and the office
- ✓ Time-consuming status updates and reporting
- ✓ Poor transparency into team workload and resource usage
- ✓ Scheduling conflicts that could have been avoided
- ✓ Outdated tools and procedures that create more problems than solutions

ProjectManager offers construction teams, regardless of their working location and preferred work style, the flexible tools they need to keep up with the dynamic nature of construction projects to standardize processes and improve project delivery.

Many remote construction teams still struggle to complete their project on time and within budget when using a traditional project management approach.

ProjectManager's Practical Solutions for Construction Teams

- Make dynamic project schedules that adapt to your needs
- Balance resources, track labor costs and keep job sites moving
- Work how you want for better collaboration and better results
- Track progress, stay on budget and keep stakeholders happy
- Save time with custom workflows & automation

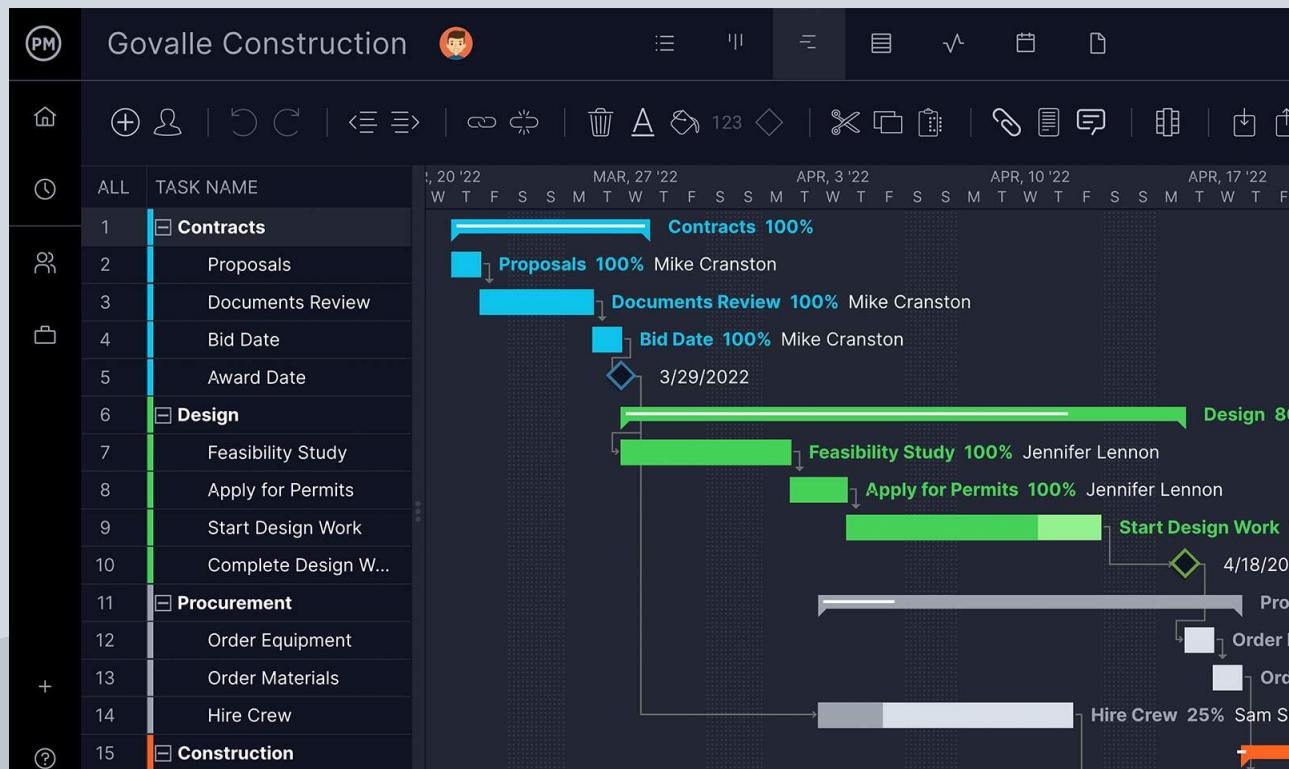


Whether your project focuses on industrial construction, residential builds, commercial construction or engineering construction, our software can help. Let's dig deeper into each of the above benefits.

Make Dynamic Project Schedules That Adapt to Your Needs

Construction projects are notoriously difficult to manage due to their ever-changing nature. Even if you take the time to thoroughly plan your construction project, it rarely goes as planned. Stagnant supply changes, unexpected weather shifts or last-minute client requests will undoubtedly impact your schedule and scope. If the project manager doesn't have adaptable tools and an easy way to communicate changes to his or her team, the project could quickly become derailed and use more resources than expected.

ProjectManager has flexible Gantt charts that can adapt to unexpected changes within your project. Use our powerful Gantt chart to link dependencies and set noteworthy milestones in your project plan to keep your team aware of updates. If there's an unexpected delay or materials don't arrive on time, simply drag and drop relevant dates on the Gantt chart and your team will automatically be updated.

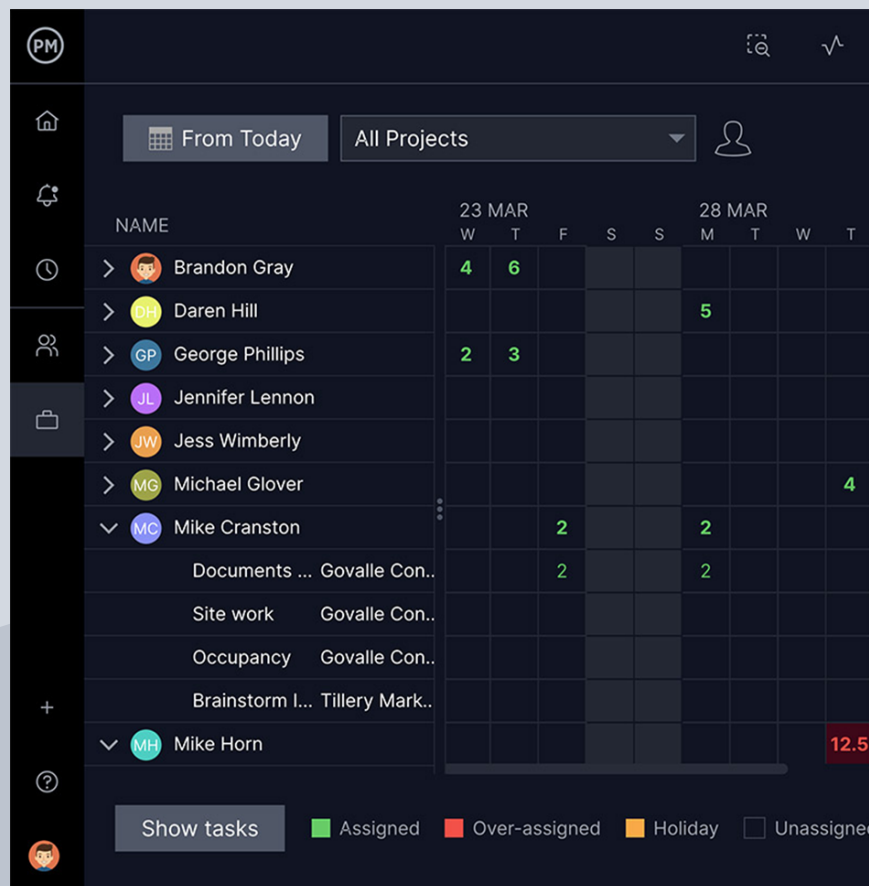


Balance Resources, Track Labor Costs and Keep Job Sites Moving

In order to successfully complete a construction project, the project manager must keep close tabs on all moving resources, but this can be particularly challenging when projects take place across sites. In construction, resources include labor, equipment, facilities, funding or anything else that's required to complete a project. As suppliers and clients request changes or the project evolves, it's difficult to make relevant crew adjustments in a timely or visible manner. For example, if a client updates a deadline, the project manager might need to factor in hiring additional crew members to execute tasks across nearby job sites.

Our resource-focused tools make it easy to monitor and make adjustments to your crew, materials, workload and more. Utilize our workload page to see the breakdown of your crew's time for a better understanding of who can take on what tasks.

- ✓ Timesheets to monitor individual workloads and to gain a better understanding of contractor and subcontractor availability
- ✓ Roadmaps to plan your project portfolio or to oversee multiple projects at once
- ✓ Calendars and working days to outline team availability including time off and holidays



Work How You Want for Better Collaboration and Better Results

Employees, contractors and subcontractors may all be working on the same project from different locations throughout the country. It can be challenging to sync with relevant roles on important updates or share data that impacts the evolution of the project. Without a single source of information for the project, it becomes nearly impossible to keep track of differences between the estimated budget and the actual costs.

Rather than forcing the entire team to work in a particular way, they can instead gravitate toward the software view of their choice.

Project View	Value	Use Case
Gantt	Manage tasks, dependencies and milestones	View task duration and important deadlines
Task List	Sort and manage projects and personal work	Create punch lists and pinpoint inefficiencies
Board	Move tasks through visual, defined workflows	Ensure work is meeting quality and compliance standards via sign-offs
Calendar	Plan for upcoming deadlines and organize schedules	Coordinate subcontractor schedules and timelines
Sheet	Analyze large amounts of project data in one place	Determine realistic timelines and reallocate resources

Track Progress, Stay on Budget and Keep Stakeholders Happy

One constant across construction projects is change. As soon as changes occur, whether it's a change in budget, materials, labor or another related facet of the project, stakeholders need to be updated. If they're not looped in, it could result in unforeseen expenses and delayed project deliverables. This means that tracking primary activities is pivotal to successful construction projects.

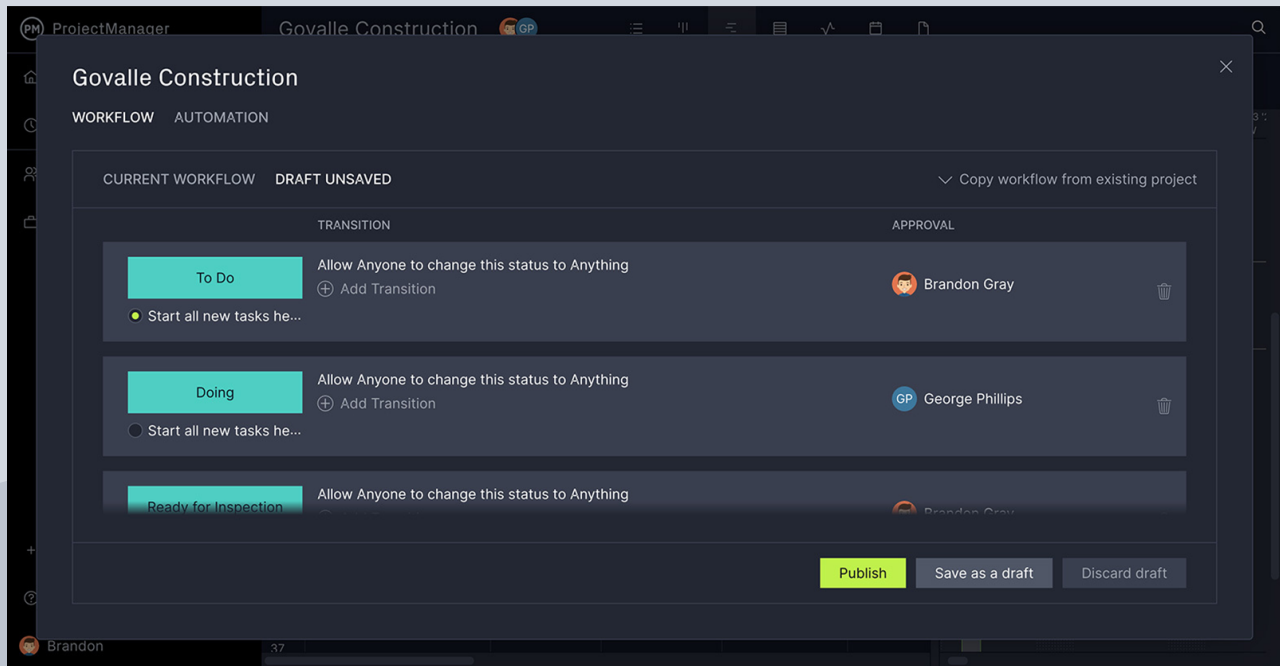
ProjectManager makes it easy to keep your stakeholders informed of any changes through real-time project tracking. Use dashboards and one-click reports to analyze real-time project data and share it with your stakeholders when you've made relevant conclusions. Our downloadable, customizable reports on project status, portfolio status, workload, timesheets and more can be attached to the project so everything stays in one location. If needed, you can also give stakeholders guest licenses so they can always access the information they need without using one of your software licenses.



Save Time with Custom Workflows & Automation

Repetitive and unproductive tasks are commonplace in construction. This is especially the case in linear construction projects that are made from highly repetitive activities that take place across different construction sites. As soon as a set of project activities are completed in one location, they are often repeated in another location. Common examples include highway, pipeline, or high-rise building construction projects.

Rather than using valuable time and resources building the same workflows, construction teams can lean on ProjectManager's custom workflow and automation features. Create defined triggers and actions and restrict who can change statuses and use the same workflow as often as needed. Maximizing efficiency is easy by establishing workflows with task approvers to ensure quality.



Customer Testimonials



“With ProjectManager, the communication is in one place and filed by task. It’s easy for [my teams] to go back over the communication and understand how we came to be there without needing to get copied on six months of email.”

Dan Smith

Head of Portfolio at CatSci



“We like this tool because it provides a way for us to collaborate effectively in a single tool, and it supports different methodologies, whether it’s agile, waterfall or just task-driven activities.”

Tim Berry

IT Director at Eco-Energy



“We can save money because we can monitor our costs and track projects in real time.”

Santiago Lasso

PMO and Consulting Director at TEC360

Ready to try **ProjectManager**
for yourself?

[Start Free Trial](#)

Want to talk to our expert
sales team?

[Contact Us](#)

